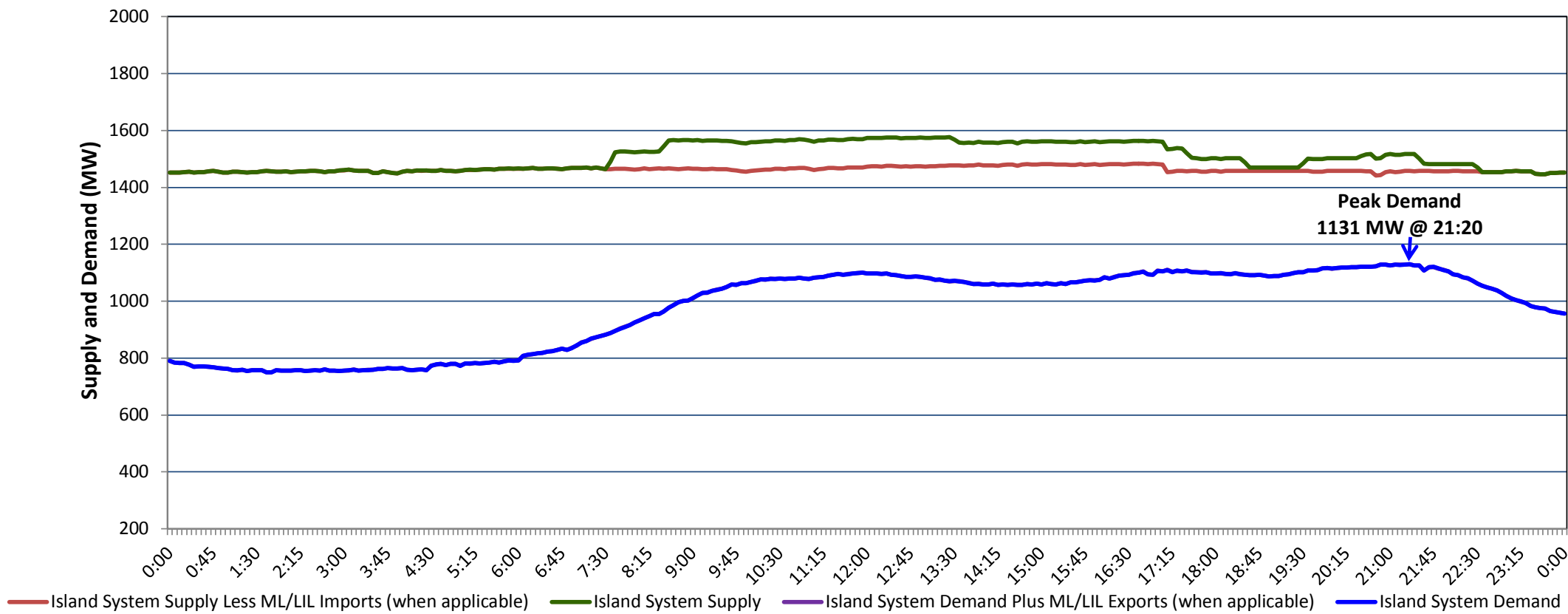


Newfoundland Labrador Hydro (NLH)
Supply and Demand Status Report Filed Monday, June 04, 2018

Section 1
Island Interconnected System Supply, Demand & Exports
Actual 24 Hour System Performance For Sunday, June 03, 2018



Supply Notes For June 03, 2018

1,2

- A As of 0801 hours, April 02, 2018, Holyrood Unit 3 unavailable due to planned outage 110 MW (150 MW).
- B As of 1800 hours, April 29, 2018, Bay d'Espoir Unit 5 unavailable due to planned outage (76.5 MW).
- C As of 0623 hours, May 08, 2018, Bay d'Espoir Unit 6 unavailable due to planned outage (76.5 MW).
- D As of 0801 hours, May 15, 2018, St. Anthony Diesel Plant available at 7.7 MW (9.7 MW).
- E As of 1834 hours, May 21, 2018, Holyrood Unit 1 available at 116 MW (170 MW).
- F As of 1438 hours, May 22, 2018, Holyrood Unit 2 unavailable due to planned outage 70 MW (170 MW).
- G As of 1357 hours, June 01, 2018, Stephenville Gas Turbine available at 25 MW (50 MW).
- H As of 1430 hours, June 02, 2018, Hardwoods Gas Turbine available at 25 MW (50 MW).

Section 2
Island Interconnected Supply and Demand

Mon, Jun 04, 2018	Island System Outlook ³			Seven-Day Forecast	Temperature (°C)		Island System Daily Peak Demand (MW)	
					Morning	Evening	Forecast	Adjusted ⁷
Available Island System Supply: ⁵	1,450	MW		Monday, June 04, 2018	1	2	1,220	1,220
NLH Generation: ⁴	1,115	MW		Tuesday, June 05, 2018	4	7	1,080	1,080
NLH Power Purchases: ⁶	130	MW		Wednesday, June 06, 2018	9	5	960	960
Maritime Link/LIL Imports:	-	MW		Thursday, June 07, 2018	3	7	885	885
Other Island Generation:	205	MW		Friday, June 08, 2018	9	9	845	845
Current St. John's Temperature & Windchill: 0 °C	-8	°C		Saturday, June 09, 2018	13	10	880	880
7-Day Island Peak Demand Forecast:	1,220	MW		Sunday, June 10, 2018	11	12	775	775

Supply Notes For June 04, 2018

3

- Notes:
- Generation outages for running and corrective maintenance are included. These are not unusual for power system operations. They generally do not impact customer supply. The power system operators schedule outages to system equipment whenever possible to coincide with periods when customer demands are low and sufficient supply reserves are available. However, from time to time equipment outages are necessary and reserves may be impacted.
 - Due to the Island System having no synchronous connections to the larger North American grid, when there is a sudden loss of large generating units some customer's load must be interrupted for short periods to bring generation output equal to customer demand. This automatic action of power system protection, referred to as under frequency load shedding, is necessary to ensure the integrity and reliability of system equipment. Under frequency events typically occur 5 to 8 times per year on the Island Interconnected System and the resultant customer load interruptions are generally less than 30 minutes.
 - As of 0800 Hours.
 - Gross output including station service at Holyrood (24.5 MW) and improved NLH hydraulic output due to water levels (35 MW).
 - Gross output from all Island sources (including Note 4).
 - NLH Power Purchases include: CBPP Co-Gen, Nalcor Exploits, Rattle Brook, Star Lake, Wind Generation, Vale capacity assistance (when applicable).
 - Adjusted for CBPP, Vale and Praxair interruptible load, Maritime Link/LIL exports and the impact of voltage reduction, when applicable.

Section 3
Island Peak Demand Information
Previous Day Actual Peak and Current Day Forecast Peak

Sun, Jun 03, 2018	Actual Island Peak Demand ⁸	21:20	1,131 MW
Mon, Jun 04, 2018	Forecast Island Peak Demand		1,220 MW

- Notes:
- Island Demand / ML Exports (where applicable) is supplied by NLH generation and purchases, plus generation owned and operated by Newfoundland Power and Corner Brook Pulp & Paper (Deer Lake Power, DLP).